

An aerial photograph of a tropical resort pool area. The pool is on the right side, with a curved edge and clear blue water. Surrounding the pool is a paved deck with several white lounge chairs and large white umbrellas. A green lawn area is in the center, also with lounge chairs. To the left is a sandy beach and the ocean. The scene is filled with palm trees and tropical vegetation.

HAMILTON ISLAND

Accommodation Factsheet



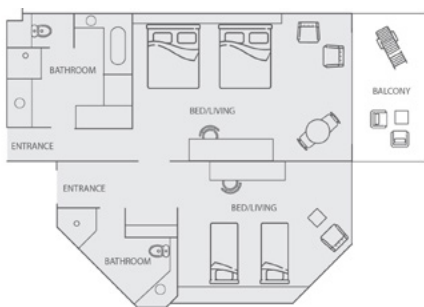
The Reef View Hotel features extremely large, well-appointed rooms all with private balconies overlooking either landscaped gardens or the breathtaking vista of the Coral Sea. The upper-most floors boast 18 luxuriously appointed suites. All rooms face the Coral Sea complete with outdoor furniture to experience the spectacular sunrises. Additional Reef View Hotel facilities include a restaurant and bar.

Property features: Restaurant, bar and lounge, 35m pool, business centre, porters desk, room service, disabled facilities, 24 hour reception, beach towels provided, access to internet, air-conditioning and ceiling fan, private balcony, television, bar fridge and mini bar, tea and coffee making facilities and rooms serviced daily.

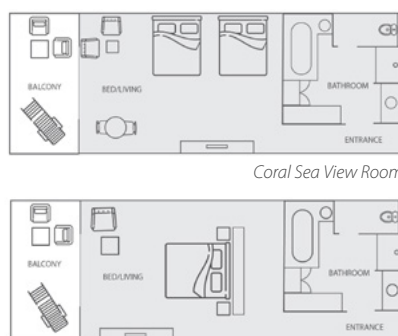
INCLUSIONS

- / Return Hamilton Island airport/marina to hotel transfers
- / Use of catamarans, kayaks, stand up paddleboards, windsurfers and snorkelling equipment
- / Use of scheduled 'Island Shuttle' service
- / Use of the gym, spa, sauna, and tennis court
- / Kids Stay and Eat Free program (conditions apply)
- / Baby's First Holiday features

Room Type	Max Guests	Bedding Configuration
Garden View Room	4	2 x queen beds
Coral Sea View Room	4	2 x queen beds
King Coral Sea View	3	1 x king bed
Reef Family Room	6	2 x queen beds and 2 x single beds



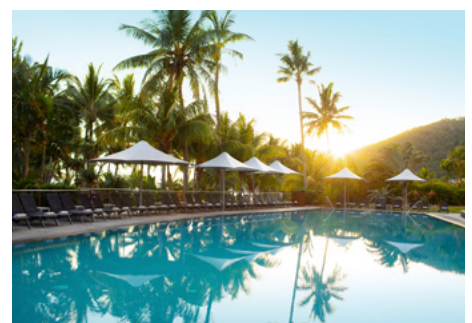
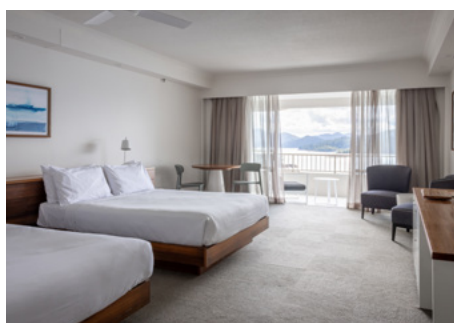
Reef Family Room



King Coral Sea View Room



Garden View Room



For more information call 137 333, email vacations@hamiltonisland.com.au or visit hamiltonisland.com.au/reef-view-hotel



Unwind, relax and stretch out in a luxury suite on one of the top floors of the Reef View Hotel. The Reef View Hotel features extremely large, well-appointed rooms all with private balconies overlooking either landscaped gardens or the breathtaking vista of the Coral Sea. Whether you are travelling with your partner, family or friends, these suites cater perfectly for all holiday groups and occasions.

Property features: Restaurant, bar and lounge, 35m pool, business centre, porters desk, room service, disabled facilities, 24 hour reception, beach towels provided, access to internet, air-conditioning and ceiling fan, private balcony, television, bar fridge and mini bar, tea and coffee making facilities and rooms serviced daily.

INCLUSIONS

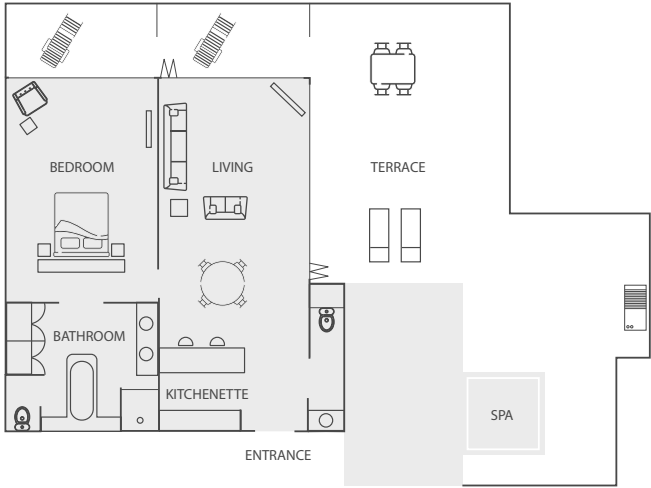
- / VIP Hamilton Island airport/marina to hotel transfers
- / Breakfast daily
- / Use of catamarans, kayaks, stand up paddleboards, windsurfers and snorkelling equipment
- / Use of scheduled 'Island Shuttle' service
- / Use of the gym, spa, sauna, and tennis court
- / Kids Stay and Eat Free program (conditions apply)
- / Baby's First Holiday features
- / Daily newspaper
- / Presidential Suite include use of a four seater golf buggy for the duration of stay
- / Complimentary non alcoholic beverages from the minibar
- / Suite concierge desk

Room Type	Max Guests	Bedding Configuration
Reef Suite	2	2 x queen beds or 1 x king bed
Reef Family Suite	6	2 x queen beds and 2 x single beds
Superior Reef Suite	2	2 x queen beds or 1 x king bed
One Bedroom Terrace Suite	2	1 x king bed (non split)
Two Bedroom Terrace Suite	6	2 x queen beds and 1 x king split
Presidential Suite	6	1 x king bed and 2 x queen beds
Superior Presidential Suite	6	1 x king bed and 2 x queen beds

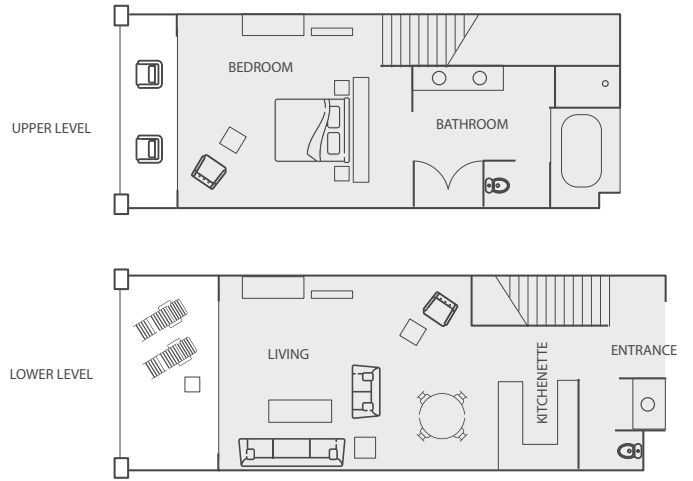


For more information call 137 333, email vacations@hamiltonisland.com.au or visit hamiltonisland.com.au/reef-view-hotel

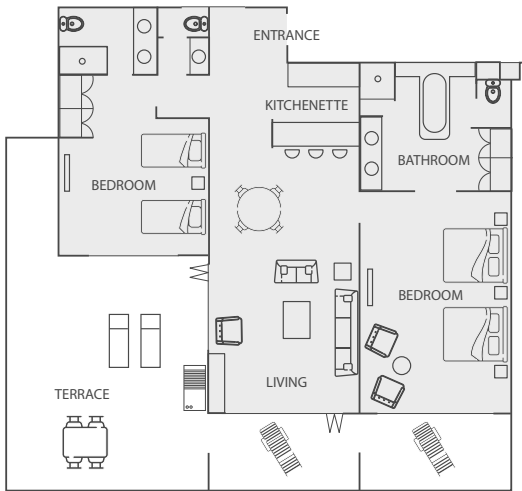
One Bedroom Terrace Suite



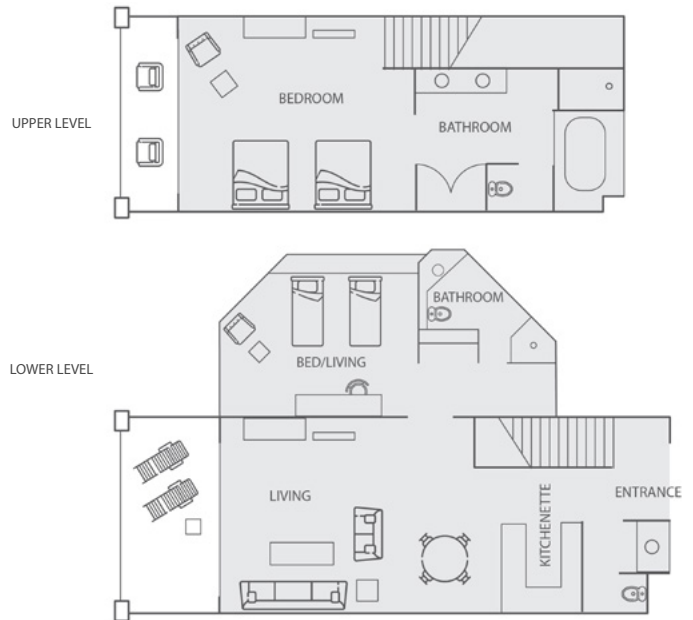
Reef Suite



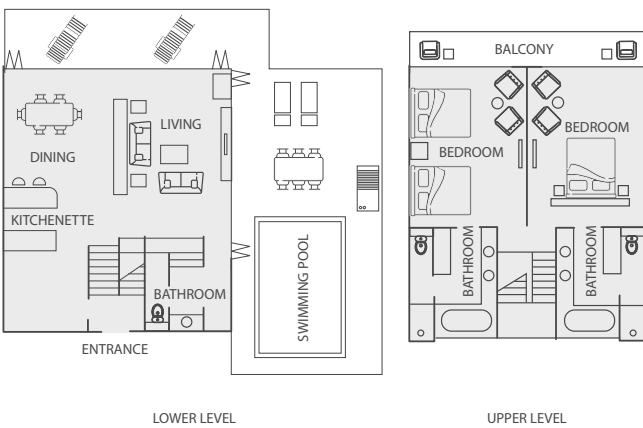
Two Bedroom Terrace Suite



Reef Family Suite



Presidential and Superior Presidential Suite



For more information call 137 333, email vacations@hamiltonisland.com.au or visit hamiltonisland.com.au/reef-view-hotel



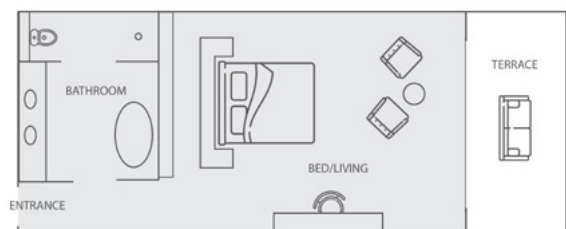
With its absolute beachfront location, the adults only Beach Club offers the ultimate holiday experience. Surrounded by landscaped gardens on Catseye Beach, Beach Club Hamilton Island is a boutique retreat exclusively for adults. Romantic, intimate and perfect for couples, the luxuriously appointed rooms have a stylish beach house vibe, tailor-made for relaxing. All rooms at Beach Club have a private courtyard or balcony looking onto palm-fringed Catseye Beach and the Coral Sea. Beach Club ticks all the boxes on the 'dream island holiday' checklist, with exclusive guest facilities including a lounge, bar and pool. But with the divine views of the sea from your private balcony – you'll find it hard to leave your room.

Property features: Private infinity-edge pool, lounge, bar and restaurant, room service (6.30am to midnight and limited after 9.00pm), library, disabled facilities, 24-hour reception, beach towels provided, access to internet, air-conditioning and ceiling fan, private balcony, television, bar fridge and mini bar, tea and coffee making facilities and rooms serviced daily.

Room Type	Rating	Max no. guests	Bedding Configuration
Beach Club	Boutique	2	1 x king bed or king split

INCLUSIONS

- / A la carte breakfast at the exclusive Beach Club restaurant daily
- / VIP return Hamilton Island airport/marina to Beach Club transfers
- / Use of catamarans, kayaks, stand up paddleboards, windsurfers and snorkelling equipment
- / Use of the gym, spa, sauna, and tennis court
- / Use of the exclusive Beach Club lounge and pool
- / Complimentary WiFi



Note: Beach Club does not cater for guests under the age of 18 years.



For more information call 137 333, email vacations@hamiltonisland.com.au or visit hamiltonisland.com.au/beach-club



Palm Bungalows

The Palm Bungalows are an affordable choice for couples and small families seeking privacy and convenience, with a relaxed, bright and airy feel and modern amenities. Well-positioned between Catseye Beach and the Marina Village, each freestanding bungalow is set in tropical landscaped gardens and has a balcony complete with outdoor furniture and garden views.

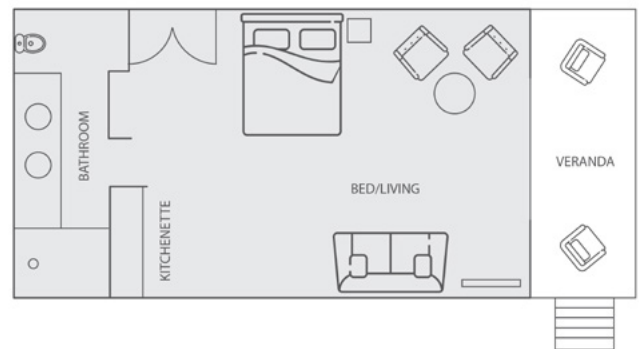
Property features: 24 hour reception, beach towels, air-conditioning and ceiling fan, private balcony, television, kitchenette with microwave and stovetop, bar fridge, tea and coffee making facilities and rooms serviced daily.

**2 x adults and 1-2 children (0-12 yrs) sharing the divan.*

Room Type	Rating	Max Guests	Bedding Configuration
Palm Bungalow	Island-style bungalow	2	1 x king bed and 1 x single divan

INCLUSIONS

- / Return Hamilton Island scheduled airport/ marina to hotel transfers
- / Use of catamarans, stand up paddleboards, windsurfers and snorkelling equipment
- / Use of 'Island shuttle' service
- / Kids Stay and Eat Free program (conditions apply)
- / Use of the gym, spa, sauna and tennis court hire
- / Baby's First Holiday features



For more information call 137 333, email vacations@hamiltonisland.com.au or visit hamiltonisland.com.au/palm-bungalows



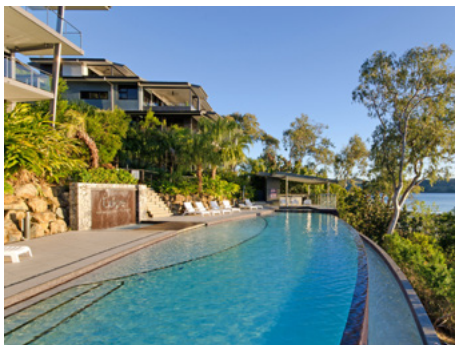
One of Hamilton Island's best kept secrets is its range of privately owned, self-catered Holiday Homes. Sleeping from one to eight visitors in one to four bedroom configurations, guests will absolutely love the independence and luxury they offer. The homes are scattered around the island and include a fully equipped kitchen, laundry, a four-seater golf buggy, complimentary use of the island shuttle service and non-motorised watersports, as well as the Kids Stay and Eat Free program. With a wide range of homes available from standard, resortside, superior, superior resortside, deluxe and luxury categories, there is something to suit all tastes and budgets.

INCLUSIONS

- / 1 x four seater golf buggy per Holiday Home
- / Use of catamarans, stand up paddleboards, windsurfers and snorkelling equipment
- / Beach towels (1 per person)
- / Kids Stay and Eat Free program (conditions apply)
- / Complimentary use of the 'Island Shuttle' service for the duration of stay
- / Home essentials pack
- / Complimentary WiFi

GOLF BUGGY HIRE

Holiday Homes include the use of 1 x four seater golf buggy for the duration of the stay. Guests are subject to all government regulations pertaining to driving registered vehicles on registered roads and must hold a current full driver's license that complies with Australian Standards and must be at least 21 years of age (Learner or Provisional licenses are not accepted). Upon check-in, a \$1 bond is required on each golf buggy. This bond can be settled via a credit card pre-authorisation only. Children aged 7 years and under require a child restraint or seatbelt when travelling in a golf buggy. The ages of children and infants are required at time of booking. Complimentary child restraints are available with your included buggy for the duration of your stay. Additional child restraints are available at an additional cost per day for additional buggy hire.



For reservations call 137 333 (within Australia) or (+61) 2 9433 0444 (outside Australia), email trade@hamiltonisland.com.au or visit hamiltonislandholidayhomes.com.au

Holiday Home	Max. adults	Low season Nightly rate (4 night MLOS)	High season Nightly rate (5 night MLOS)	Festive season 5 night MLOS
1 Bedroom Holiday Homes				
Standard	4	\$440	\$530	\$640
2 Bedroom Holiday Homes				
Standard	6	\$530	\$640	\$770
Standard Resortsideside	6	\$610	\$740	\$890
Superior	6	\$660	\$800	\$960
Superior Resortsideside	5	\$760	\$920	\$1,110
Luxury	4	\$920	\$1,110	\$1,340
3 Bedroom Holiday Homes				
Standard	6	\$660	\$800	\$960
Superior	6	\$840	\$1,010	\$1,220
Deluxe	6	\$940	\$1,130	\$1,360
Luxury	6	\$1,210	\$1,460	\$1,760
4 Bedroom Holiday Homes				
Superior	8	\$990	\$1,190	\$1,430
Deluxe	8	\$1,250	\$1,500	\$1,800
Luxury	8	\$1,460	\$1,760	\$2,120
4 Bedroom Yacht Club Villas				
Standard	8	\$1,660	\$2,000	\$2,400
Premium	8	\$1,870	\$2,250	\$2,700

*All rates are in AUD per property per night, up to maximum capacity

Travel Validity Dates:

Low season: 8 October – 20 December 2023; 28 January – 27 March 2024 (inclusive)

High season: 15 September – 7 October 2023; 8 January – 27 January 2024; 28 – 31 March 2024 (inclusive)

Festive season: 21 December 2023 – 7 January 2024 (inclusive)

Availability and pricing may change at any time subject to the booking terms and conditions. To see detailed rates for specific travel periods, please see our [Property Search page](#).

Properties not available to Trade:

Blue Sands; Barrier Reef House; Bella Vista West #1; Whitehaven House; Element Hill; Woodlands; Casuarina Cove #17; Compass Point #12; La Bella Waters #3; Lagoon Lodge #001; Oasis #27; Frangipani Lodge #108; Yacht Club Villas #3, #10, #14, #25, Yacht Harbour Towers #1, #3, #7 & #10 (Subject to change)



Whether you're looking for simple self-catering convenience, or the ultimate in luxury, you're sure to find the perfect option on Hamilton Island. Accommodating one to eight people in four bedroom configurations, the Yacht Club Villas are self-contained, air-conditioned, and share landscaped gardens and swimming pools. Plus, the villas come with a private four-seater golf buggy, so you can explore the Whitsundays' premier holiday destination at your own pace.

The luxury Yacht Club Villas, nestled alongside the iconic Hamilton Island Yacht Club, boast a superb waterfront position with breathtaking ocean views over Dent Passage. With a design emphasis on privacy and space, each villa spans three to four levels according to position and is within easy reach of the Hamilton Island Marina and the 18-hole championship Hamilton Island Golf Club.

KEY FEATURES AND INCLUSIONS

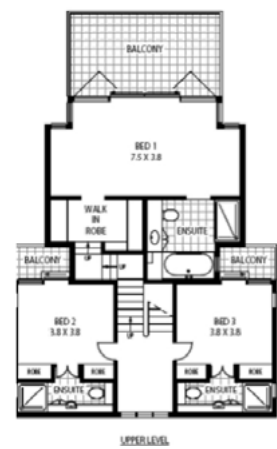
- / Private, exclusive four-bedroom waterfront villas with breathtaking views over Dent Passage and a waterfront lagoon swimming pool
- / Use of catamarans, stand up paddleboards, windsurfers and snorkelling equipment
- / Beach towels (1 per person)
- / Complimentary use of the 'Island Shuttle' service for the duration of stay
- / Complimentary WiFi
- / Designed by renowned architect Walter Borda, with landscaping crafted by celebrity landscape designer Jamie Durie
- / Located alongside the Hamilton Island Yacht Club, which encompasses the island's signature restaurant and bar, Bommie
- / Just moments from the Hamilton Island Marina, offering a range of restaurants, bars, shops and essential services (including a post office, pharmacy and IGA supermarket)
- / Use of a four seater electric golf buggy per property
- / Kids Stay and Eat Free program



For reservations call 137 333 (within Australia) or (+61) 2 9433 0444 (outside Australia), email trade@hamiltonisland.com.au or visit hamiltonislandholidayhomes.com.au/yacht-club-villas

CONFIGURATION AND FACILITIES

- / Spacious open plan living area with soaring ceilings and external bi-fold louver shutters flowing onto large outdoor area
- / A choice of Standard or Premium villa categories all with water views (categories differ in villa location and view)
- / 4 bedroom villas with 4 bathrooms, maximum number of guests 8
- / Bedroom 1 (master suite): 1 x king, walk-in robe, en suite, large external balcony with 2 sun beds / Bedroom 2: 1 x queen with built in wardrobe and en suite / Bedroom 3: 1 x queen with built in wardrobe and en suite / Bedroom 4: 1 x king or 2 singles with built in wardrobe, bathroom located opposite
- / State-of-the-art gourmet kitchen with Miele appliances
- / Separate laundry with Miele washer and dryer
- / Dining and outdoor table with seating for 8
- / Gas Weber BBQ
- / Ducted air-conditioning
- / 46" Plasma TV and surround sound system
- / Mid-stay clean for any bookings 5 nights or longer



GOLF BUGGY HIRE

If you are staying in a Yacht Club Villa, the villa includes the use of 1 x four seater golf buggy for the duration of the stay. Guests are subject to all government regulations pertaining to driving registered vehicles on registered roads and must hold a current full driver's license that complies with Australian Standards – Learner or Provisional licenses are not accepted. Upon check-in, a \$1.00 bond is required on each golf buggy. This bond can be settled via a credit card pre-authorisation only. Children aged 7 years and under require a child restraint or seatbelt when travelling in a golf buggy. The ages of children and infants are required at time of booking. Child restraints are available at an additional cost for duration of stay.

Holiday Home	Max. adults	Low season	High season	Festive season
		Nightly rate (4 night MLOS)	Nightly rate (5 night MLOS)	5 night MLOS
4 Bedroom Yacht Club Villas				
Standard	8	\$1,660	\$2,000	\$2,400
Premium	8	\$1,870	\$2,250	\$2,700

*All rates are in AUD per property per night, up to maximum capacity

Travel Validity Dates:

- Low season:** 8 October – 20 December 2023; 28 January – 27 March 2024 (inclusive)
- High season:** 15 September – 7 October 2023; 8 January – 27 January 2024; 28 – 31 March 2024 (inclusive)
- Festive season:** 21 December 2023 – 7 January 2024 (inclusive)

Availability and pricing may change at any time subject to the booking terms and conditions. To see detailed rates for specific travel periods, please see our [Property Search page](#).

Yacht Club Villas not available to Trade:

#3, #10, #14, #25 (Subject to change)

For reservations call 137 333 (within Australia) or (+61) 2 9433 0444 (outside Australia), email trade@hamiltonisland.com.au or visit hamiltonislandholidayhomes.com.au/yacht-club-villas